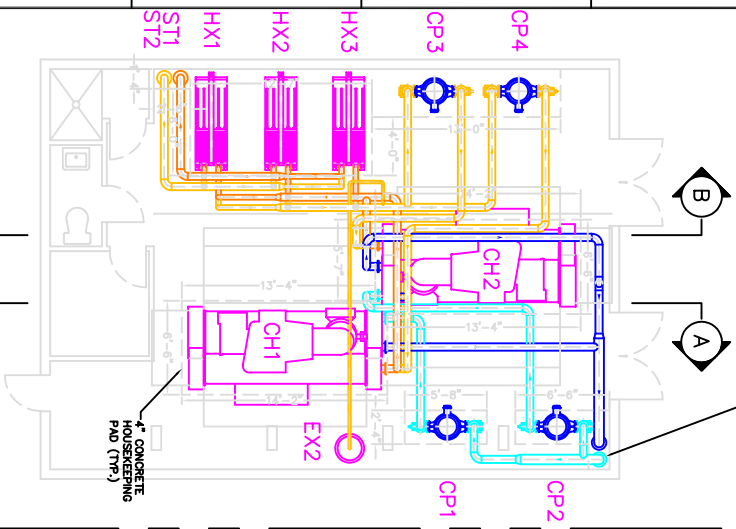
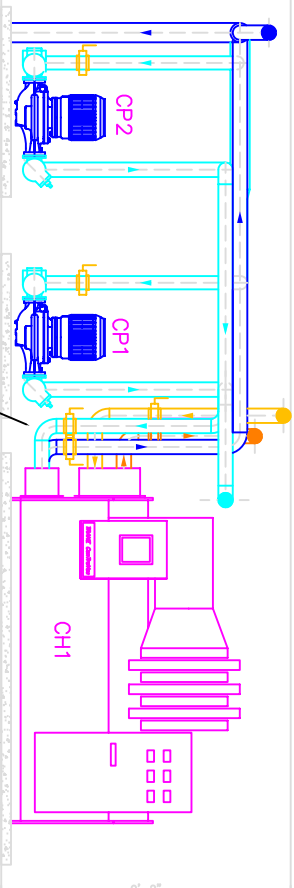


CP1	394 LBS
CP2	394 LBS
CP3	460 LBS
CP4	460 LBS
HX1	3,900 LBS
HX2	3,900 LBS
HX3	3,900 LBS
CH1	20,764 LBS
CH2	20,764 LBS
EX2	144 LBS



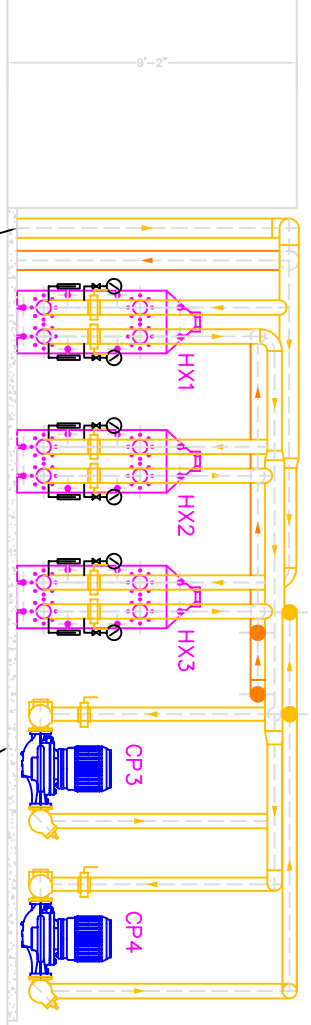
CHILLER ROOM - LAYOUT



PROVIDE DISMOUNTABLE FLANGES FOR ALL PIPES TO FACILITATE CLEANING OF TUBES

SECTION A - A

4\"/>



LOCATE STRAINERS ST1 & ST2 ON THE FLOOR IN THIS APPROXIMATE LOCATION.

SECTION B - B

4\"/>

NOTICE: The user is the owner. The user is responsible for the accuracy of the information provided. The user is responsible for the accuracy of the information provided. The user is responsible for the accuracy of the information provided.

NO.	DATE	REVISION DESCRIPTION
1		
2		
3		
4		
5		
6		
7		
8		
9		
10		

TITLE
CHILLED WATER PLANT
CHILLER ROOM LAYOUT
PROJECT: COOLING/HEATING RETROFIT
BERMUDA COLLEGE

DESIGNER: OMO JOHNSON
PROJECT ENGINEER: OMO JOHNSON
ENGINEER: JACK AMBERG
DATE: JULY 31, 1998
CHECKED: JACK AMBERG
DESIGNED: JACK AMBERG
APPROVED: JACK AMBERG
APPROVED: OMO JOHNSON



SEMPIONE ROAD, FARMINGHAM RM 07, BERMUDA
LX2000
DOCUMENT NO. 1 OF 1
SHEET NO. REVISION